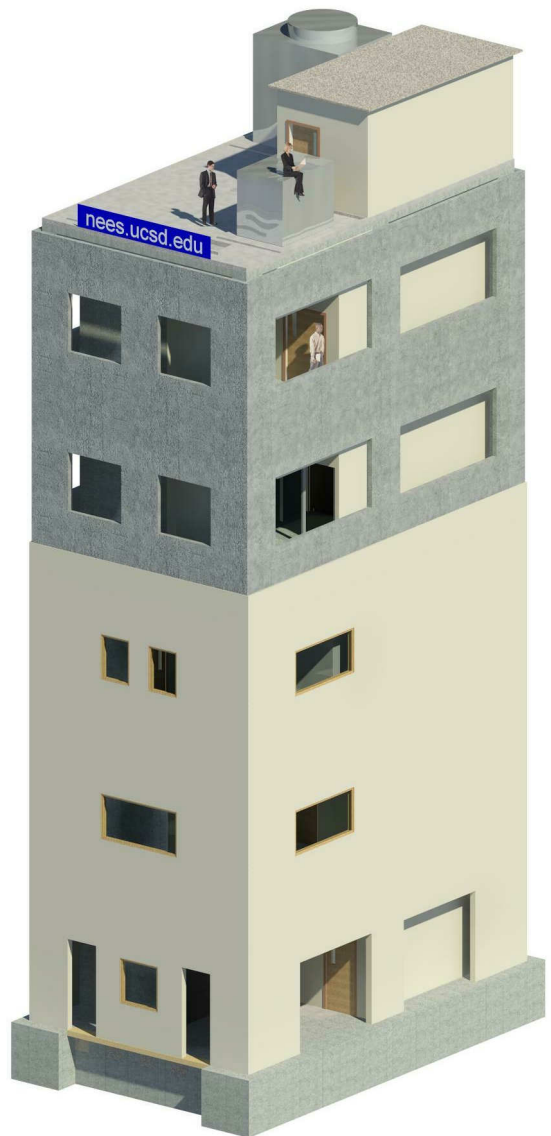


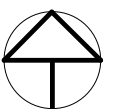
② NE ISOMETRIC
3" = 1'-0"



① SW ISOMETRIC
3" = 1'-0"

REVISIONS			
No.	Date	Description	Drawn By

NOT TO SCALE



UCSD

UNIVERSITY OF CALIFORNIA, SAN DIEGO
DEPARTMENT OF STRUCTURAL ENGINEERING
LA JOLLA - CALIFORNIA 92093-0085 - (858) 822-5935

APPROVED FOR CONSTRUCTION

RENDERINGS

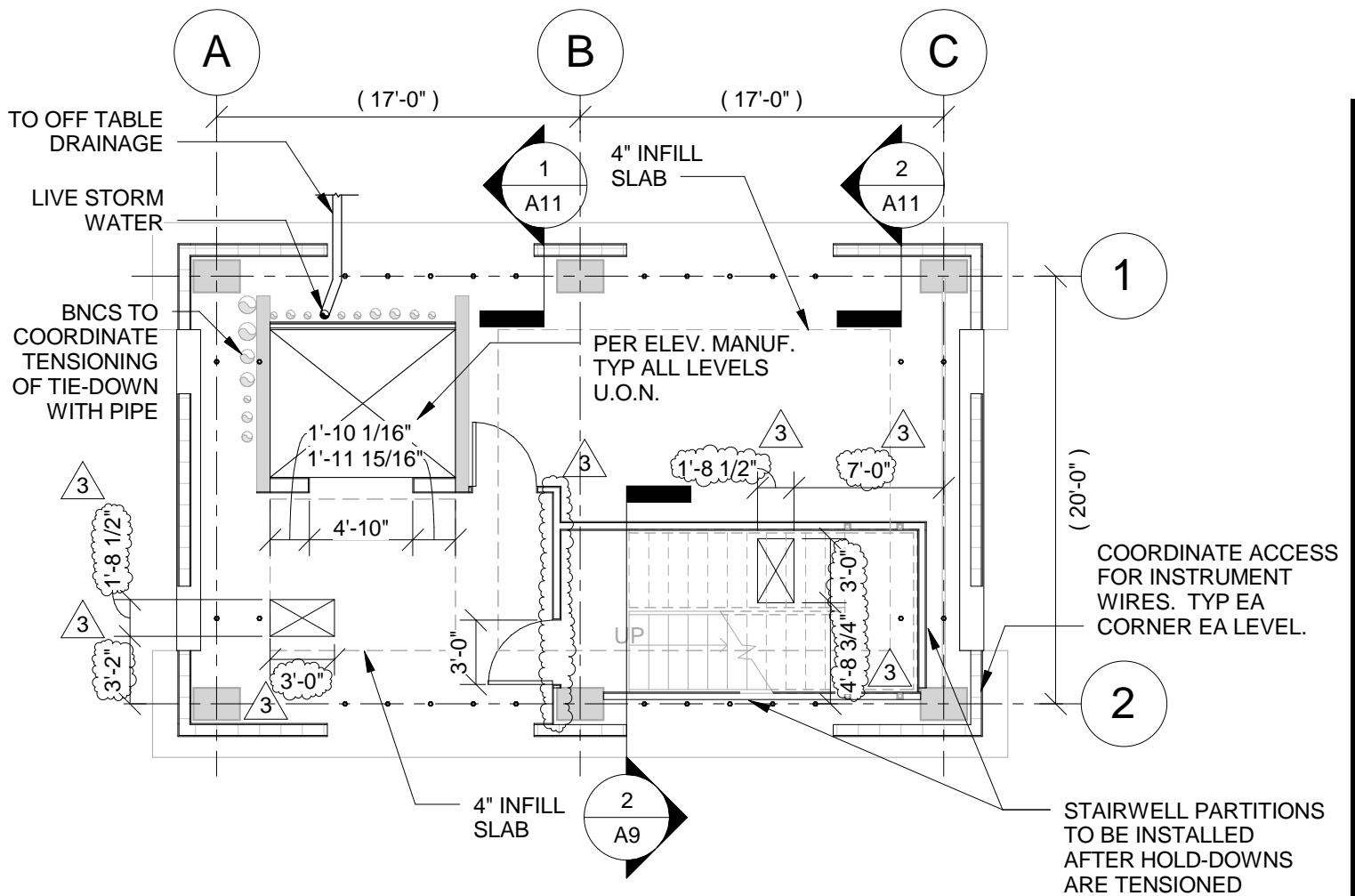
ARCHITECTURAL DRAWINGS

Project Name
BNCS

Figure

A0.1

Date
11/04/2011



NOTES:

1. INFORMATION IN PARANTHESIS (XXX) FOR REFERENCE ONLY. INDICATED NOTES ARE SUPERCEDED BY OTHER NOTED INFORMATION AND FIELD CONDITIONS

NOT TO SCALE

LEVEL 1 - UTILITY ROOM

PARTITION DRAWINGS

Project Name
BNCS

Date
11/04/2011

REVISIONS			
No.	Date	Description	Drawn By
3	TBD	As Built	Mintz, S.

UCSD

UNIVERSITY OF CALIFORNIA, SAN DIEGO
DEPARTMENT OF STRUCTURAL ENGINEERING
LA JOLLA - CALIFORNIA 92093-0085 - (858) 822-5935

APPROVED FOR CONSTRUCTION



Figure

A1.0

1 HR RATED WALL - FULL HEIGHT

UNRATED WALL - FULL HEIGHT

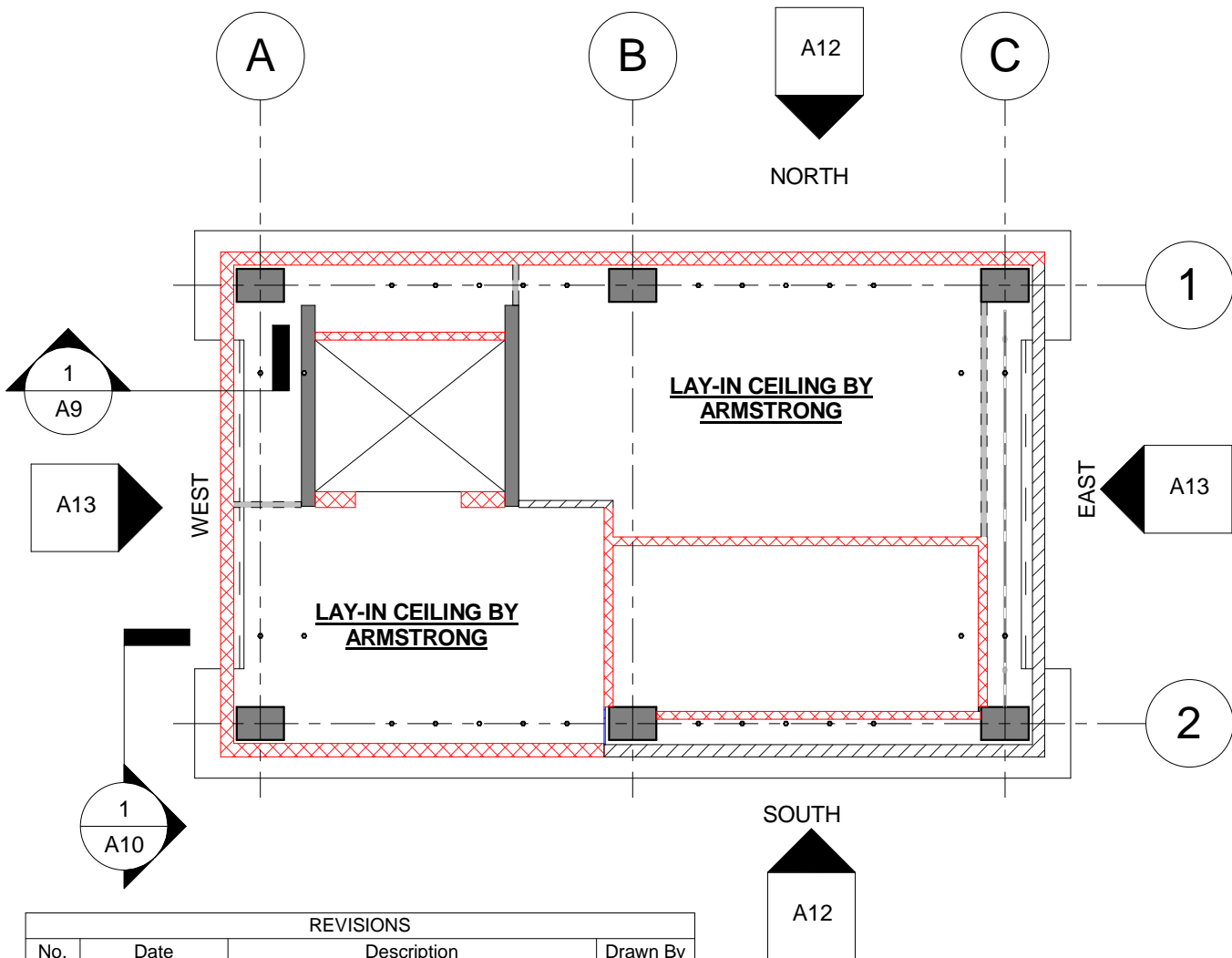
Studs extend to slab above OR lateral support provided at top of partition by kicker detail per Cemco

UNRATED WALL - PARTIAL HEIGHT

Partition wall laterally supported by Ceiling.

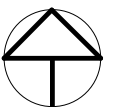
BULKHEAD

Bulkhead extends below finished ceiling heights by 6" min.



REVISIONS			
No.	Date	Description	Drawn By

NOT TO SCALE



UCSD

UNIVERSITY OF CALIFORNIA, SAN DIEGO
DEPARTMENT OF STRUCTURAL ENGINEERING
LA JOLLA - CALIFORNIA 92093-0085 - (858) 822-5935

APPROVED FOR CONSTRUCTION

LEVEL 1 - WALL LAYOUT

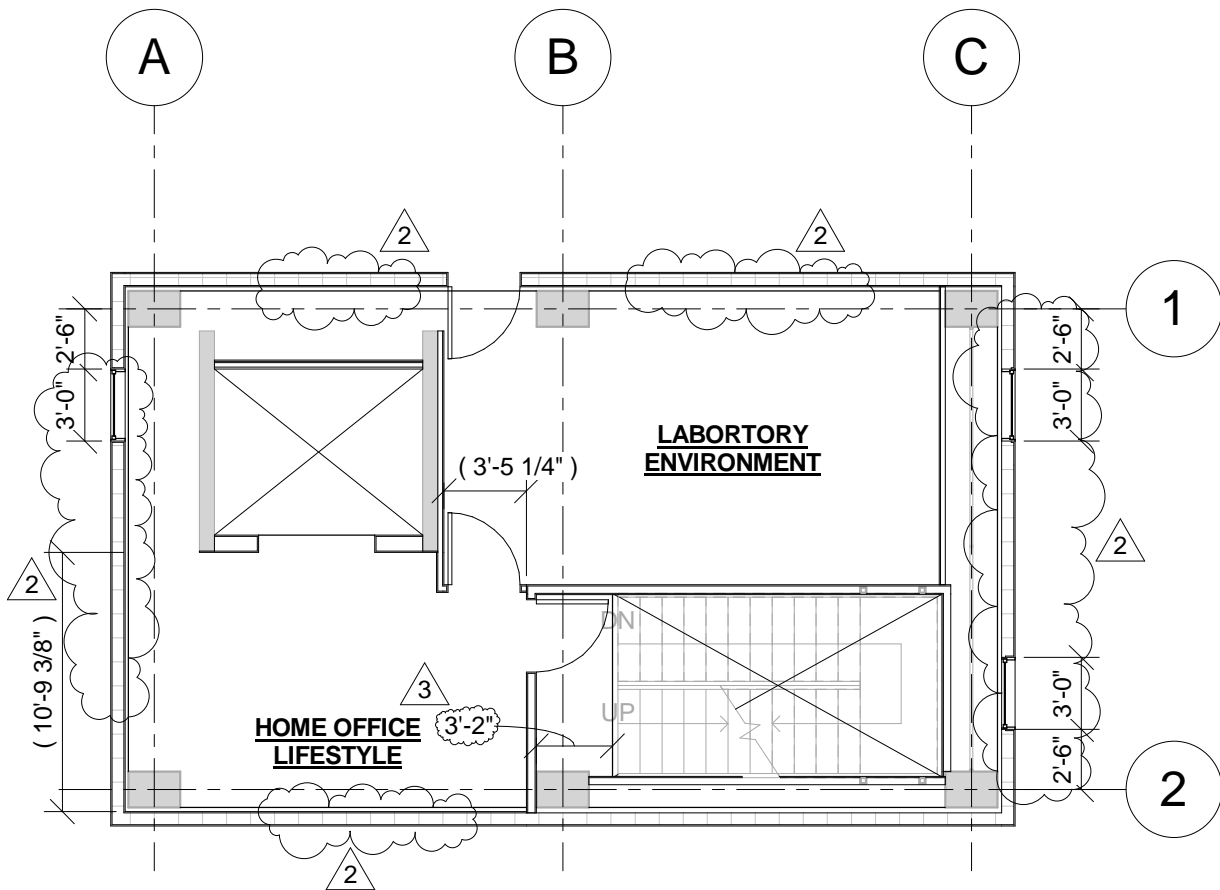
PARTITION DRAWINGS

Project Name
BNCS

Figure

A1.1

Date
11/04/2011



REVISIONS			
No.	Date	Description	Drawn By
2	11/04/2011	Window Locations	Chen, M.
3	TBD	As Built	Mintz, S.

NOT TO SCALE



UCSD

UNIVERSITY OF CALIFORNIA, SAN DIEGO
DEPARTMENT OF STRUCTURAL ENGINEERING
LA JOLLA - CALIFORNIA 92093-0085 - (858) 822-5935

APPROVED FOR CONSTRUCTION

LEVEL 2 - QUAKEHOLD
LIFESTYLES

PARTITION DRAWINGS

Project Name
BNCS

Figure

A2.0

Date
11/04/2011

1 HR RATED WALL - FULL HEIGHT

UNRATED WALL - FULL HEIGHT

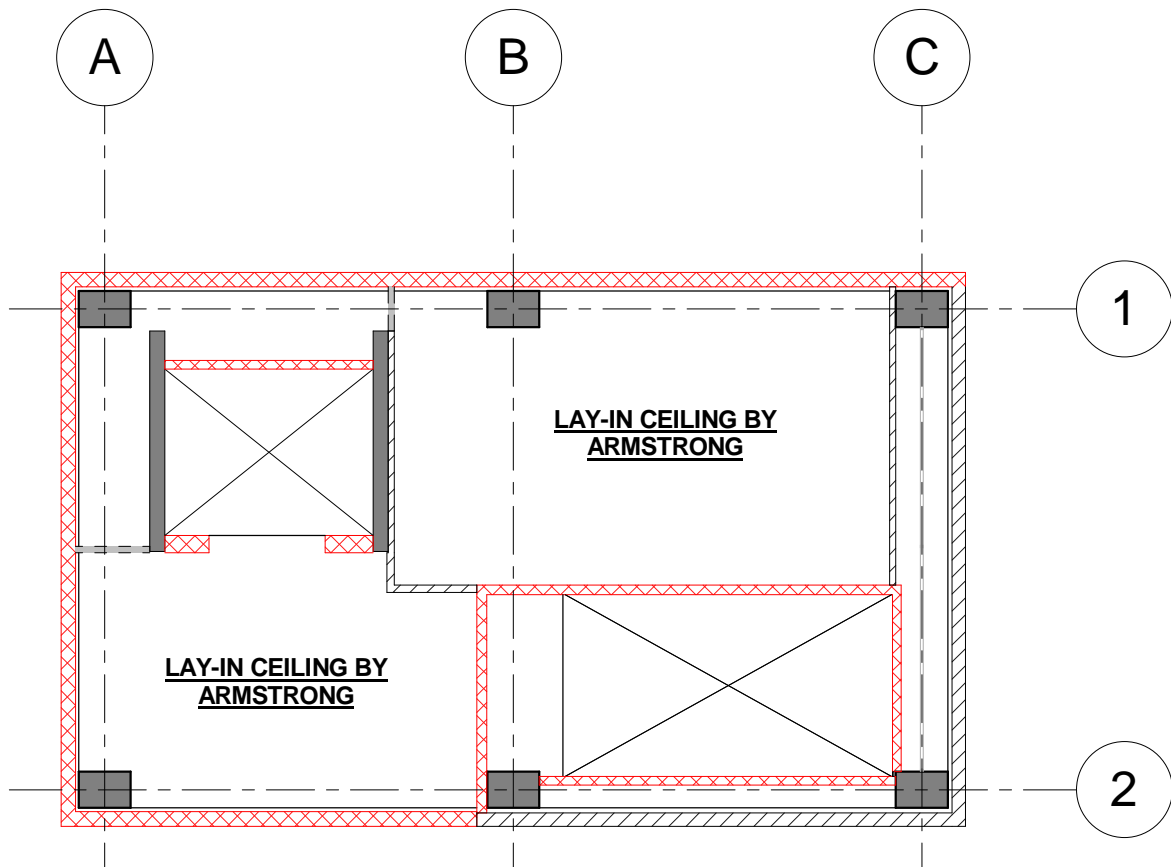
Studs extend to slab above OR lateral support provided at top of partition by kicker detail per Cemco

UNRATED WALL - PARTIAL HEIGHT

Partition wall laterally supported by Ceiling.

BULKHEAD

Bulkhead extends below finished ceiling heights by 6" min.



REVISIONS			
No.	Date	Description	Drawn By

NOT TO SCALE



UCSD

UNIVERSITY OF CALIFORNIA, SAN DIEGO
DEPARTMENT OF STRUCTURAL ENGINEERING
LA JOLLA - CALIFORNIA 92093-0085 - (858) 822-5935

APPROVED FOR CONSTRUCTION

LEVEL 2 - WALL LAYOUT

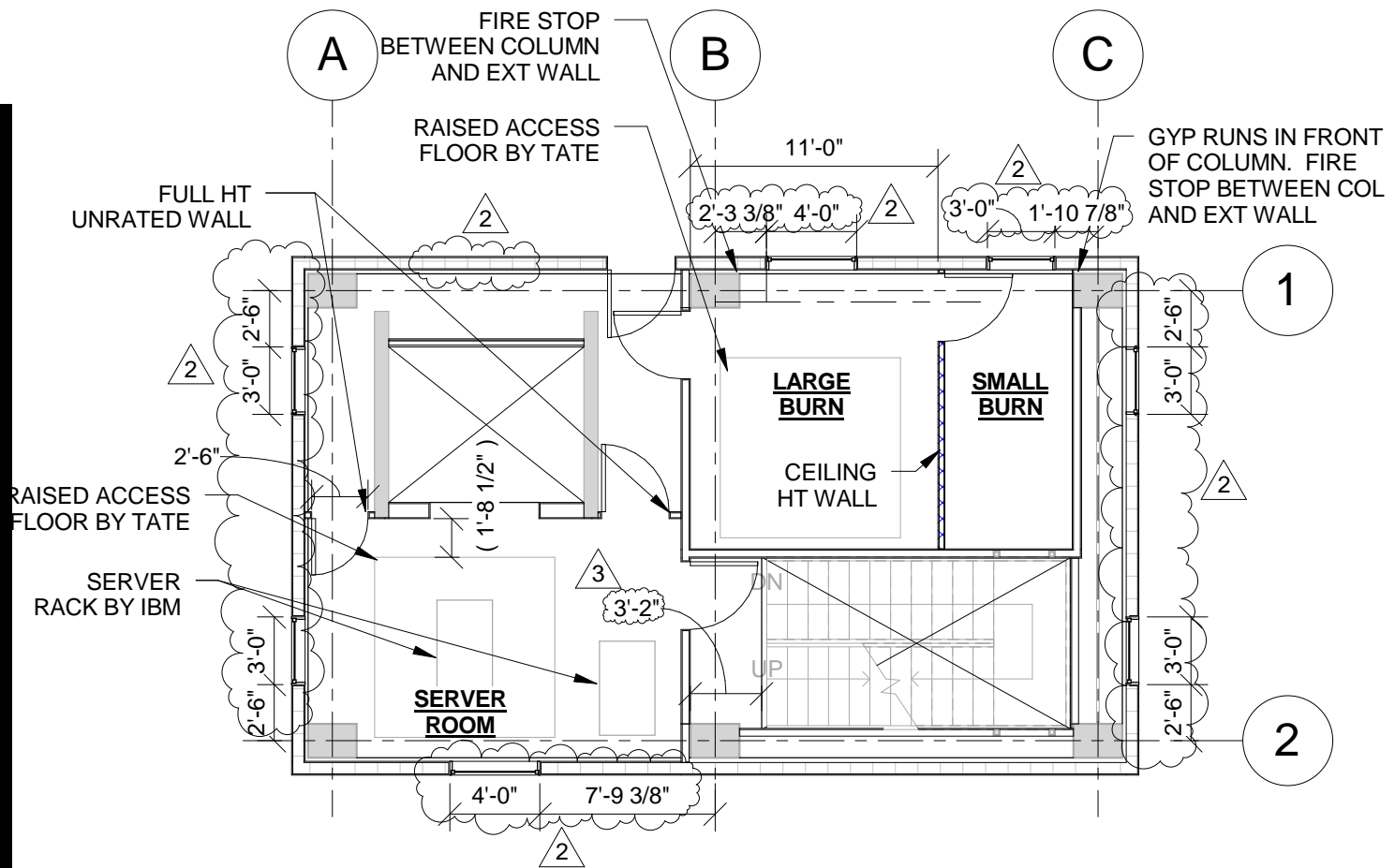
PARTITION DRAWINGS

Project Name
BNCS

Figure

A2.1

Date
11/04/2011



REVISIONS			
No.	Date	Description	Drawn By
2	11/04/2011	Window Locations	Chen, M.
3	TBD	As Built	Mintz, S.

NOT TO SCALE



UCSD

UNIVERSITY OF CALIFORNIA, SAN DIEGO
DEPARTMENT OF STRUCTURAL ENGINEERING
LA JOLLA - CALIFORNIA 92093-0085 - (858) 822-5935

APPROVED FOR CONSTRUCTION

LEVEL 3 - SERVER ROOM

Figure

A3.0

PARTITION DRAWINGS

Project Name
BNCS

Date
11/04/2011

1 HR RATED WALL - FULL HEIGHT

UNRATED WALL - FULL HEIGHT

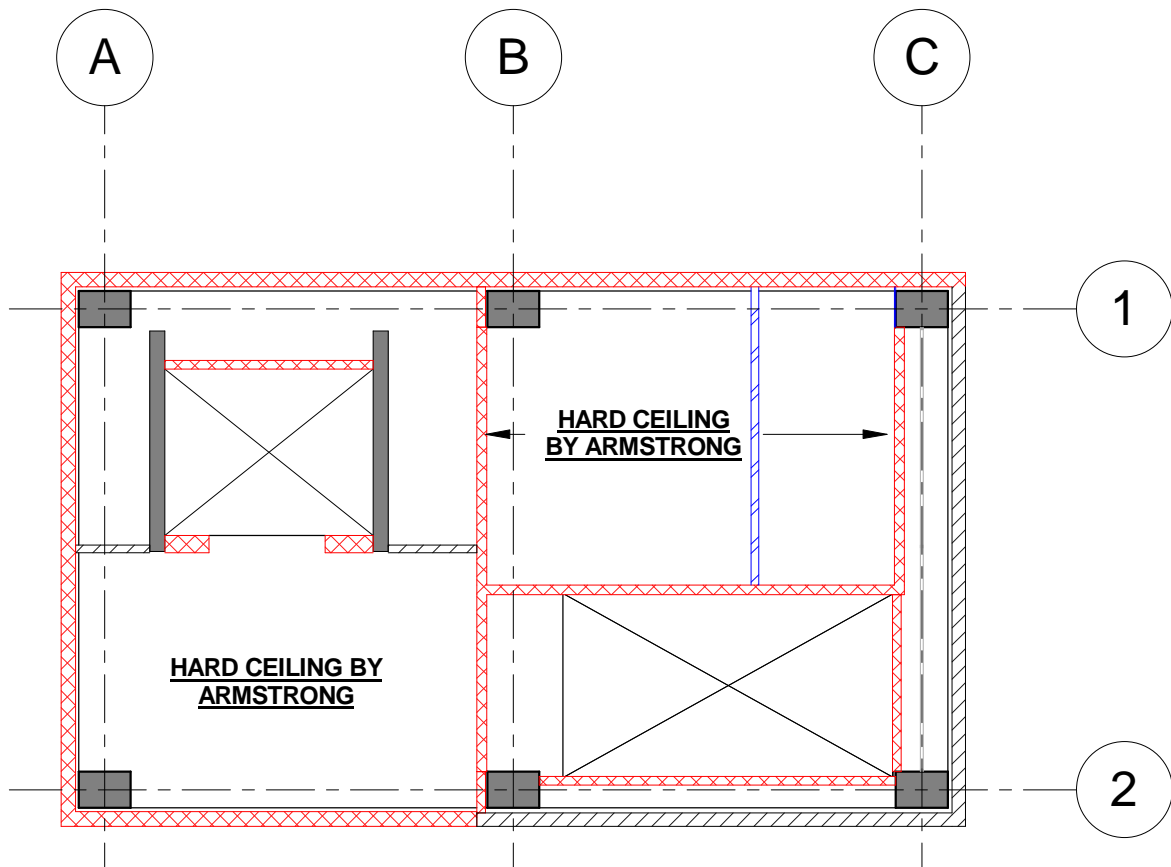
Studs extend to slab above OR lateral support provided at top of partition by kicker detail per Cemco

UNRATED WALL - PARTIAL HEIGHT

Partition wall laterally supported by Ceiling.

BULKHEAD

Bulkhead extends below finished ceiling heights by 6" min.



REVISIONS			
No.	Date	Description	Drawn By

NOT TO SCALE



UCSD

UNIVERSITY OF CALIFORNIA, SAN DIEGO
DEPARTMENT OF STRUCTURAL ENGINEERING
LA JOLLA - CALIFORNIA 92093-0085 - (858) 822-5935

APPROVED FOR CONSTRUCTION

LEVEL 3 - WALL LAYOUT

PARTITION DRAWINGS

Project Name
BNCS

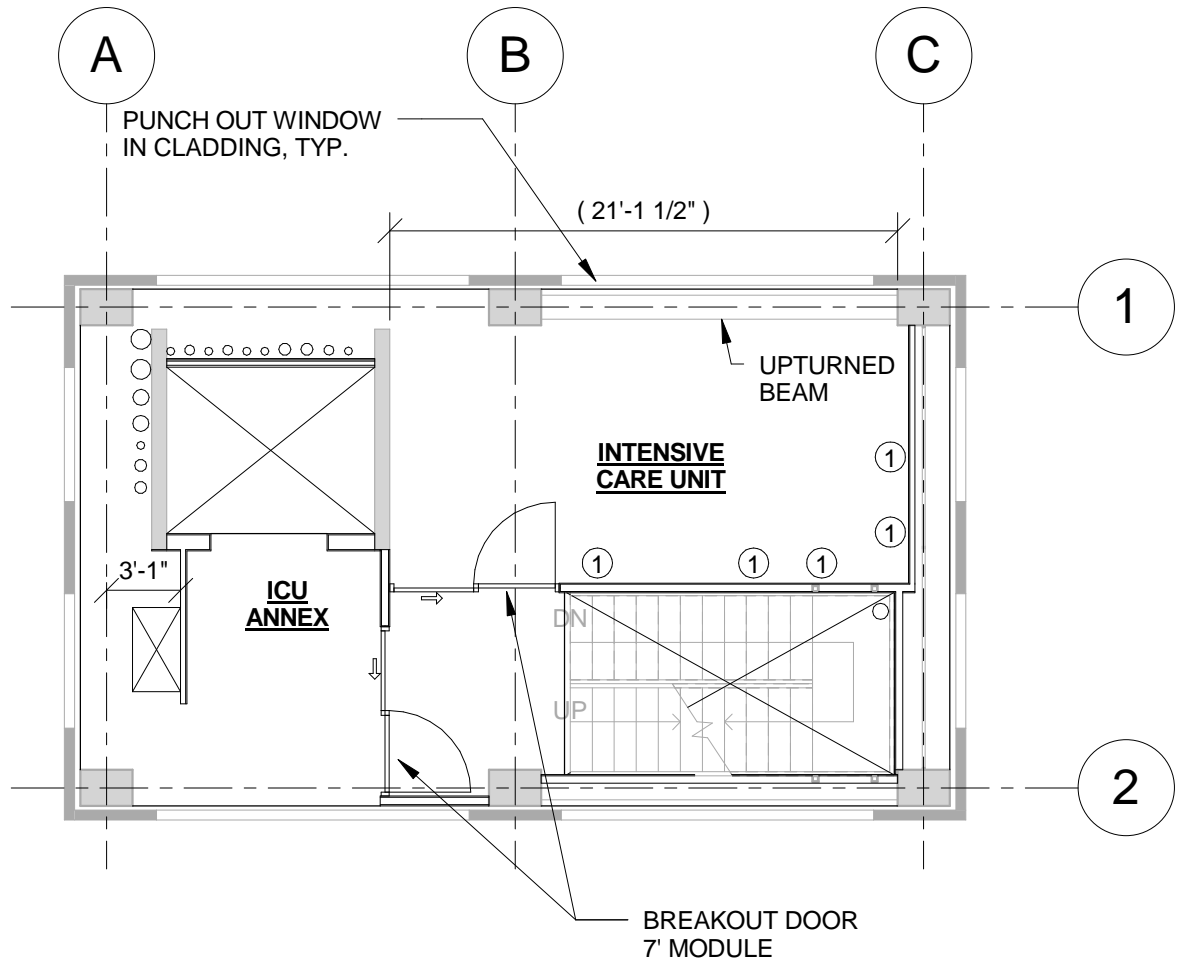
Figure

A3.1

Date
11/04/2011

SHEET NOTES:

- ① INDICATES BACKING PLATES REQUIRED FOR HOSPITAL EQUIPMENT.
SEE AF DRAWINGS FOR LOCATION AND DETAILS.



REVISIONS			
No.	Date	Description	Drawn By

NOT TO SCALE



UCSD

UNIVERSITY OF CALIFORNIA, SAN DIEGO
DEPARTMENT OF STRUCTURAL ENGINEERING
LA JOLLA - CALIFORNIA 92093-0085 - (858) 822-5935

APPROVED FOR CONSTRUCTION

LEVEL 4 - ICU

PARTITION DRAWINGS

Project Name
BNCS

Figure

A4.0

Date
11/04/2011

1 HR RATED WALL - FULL HEIGHT

UNRATED WALL - FULL HEIGHT

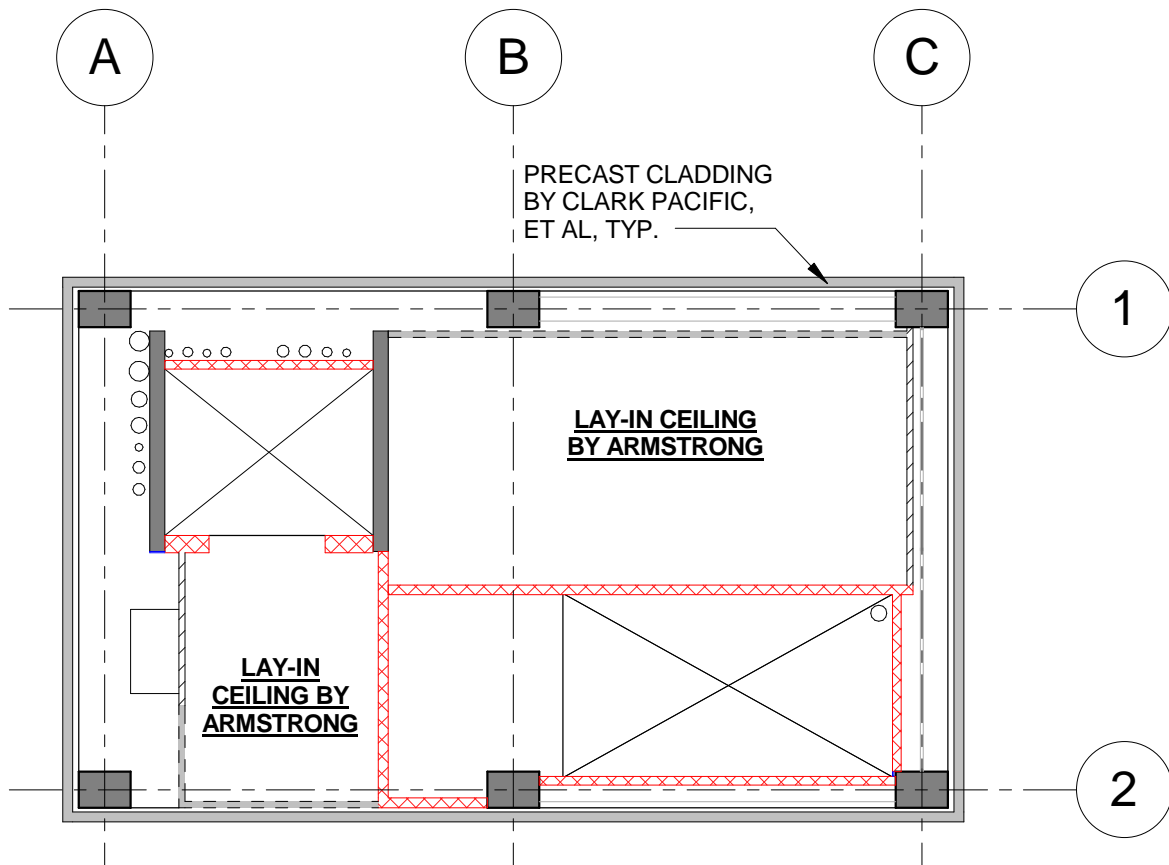
Studs extend to slab above OR lateral support provided at top of partition by kicker detail per Cemco

UNRATED WALL - PARTIAL HEIGHT

Partition wall laterally supported by Ceiling.

BULKHEAD

Bulkhead extends below finished ceiling heights by 6" min.



REVISIONS			
No.	Date	Description	Drawn By

NOT TO SCALE

UCSD

UNIVERSITY OF CALIFORNIA, SAN DIEGO
DEPARTMENT OF STRUCTURAL ENGINEERING
LA JOLLA - CALIFORNIA 92093-0085 - (858) 822-5935

APPROVED FOR CONSTRUCTION

LEVEL 4 - WALL LAYOUT

PARTITION DRAWINGS

Project Name
BNCS

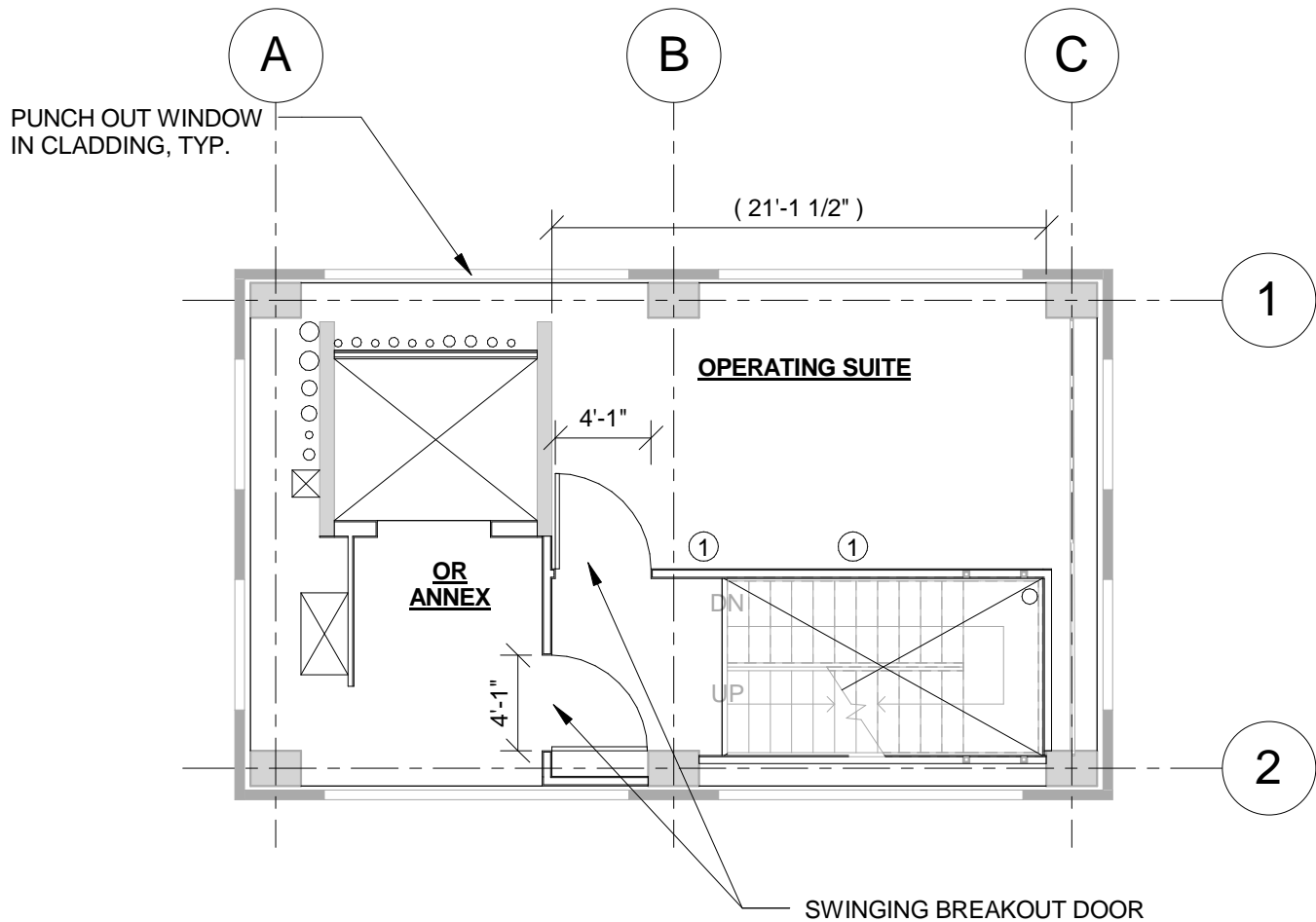
Figure

A4.1

Date
11/04/2011

SHEET NOTES:

- ① INDICATES BACKING PLATES REQUIRED FOR HOSPITAL EQUIPMENT.
SEE AF DRAWINGS FOR LOCATION AND DETAILS.



REVISIONS			
No.	Date	Description	Drawn By

NOT TO SCALE



UCSD

UNIVERSITY OF CALIFORNIA, SAN DIEGO
DEPARTMENT OF STRUCTURAL ENGINEERING
LA JOLLA - CALIFORNIA 92093-0085 - (858) 822-5935

APPROVED FOR CONSTRUCTION

LEVEL 5 - OPERATING SUITE

PARTITION DRAWINGS

Project Name
BNCS

Figure

A5.0

Date
11/04/2011

1 HR RATED WALL - FULL HEIGHT

UNRATED WALL - FULL HEIGHT

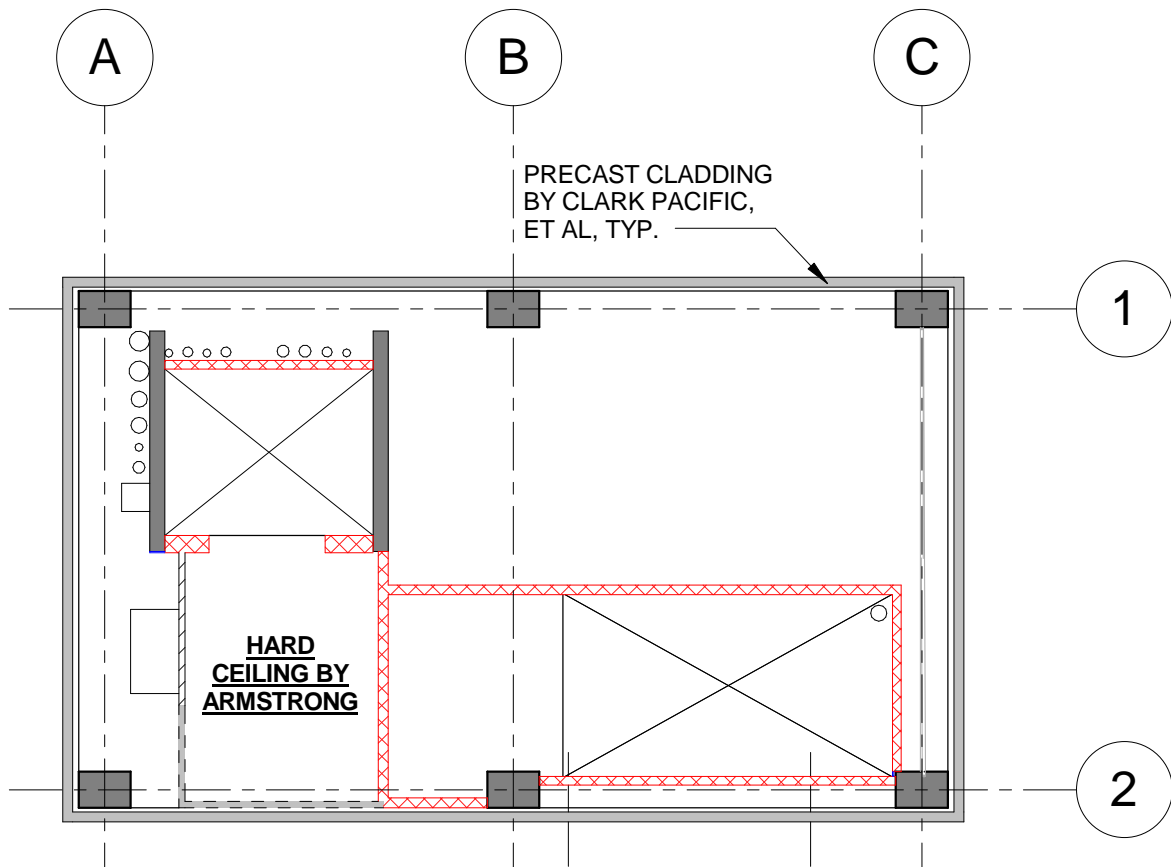
Studs extend to slab above OR lateral support provided at top of partition by kicker detail per Cemco

UNRATED WALL - PARTIAL HEIGHT

Partition wall laterally supported by Ceiling.

BULKHEAD

Bulkhead extends below finished ceiling heights by 6" min.



REVISIONS

No.	Date	Description	Drawn By

NOT TO SCALE



UCSD

UNIVERSITY OF CALIFORNIA, SAN DIEGO
DEPARTMENT OF STRUCTURAL ENGINEERING
LA JOLLA - CALIFORNIA 92093-0085 - (858) 822-5935

APPROVED FOR CONSTRUCTION

LEVEL 5 - WALL LAYOUT

PARTITION DRAWINGS

Project Name
BNCS

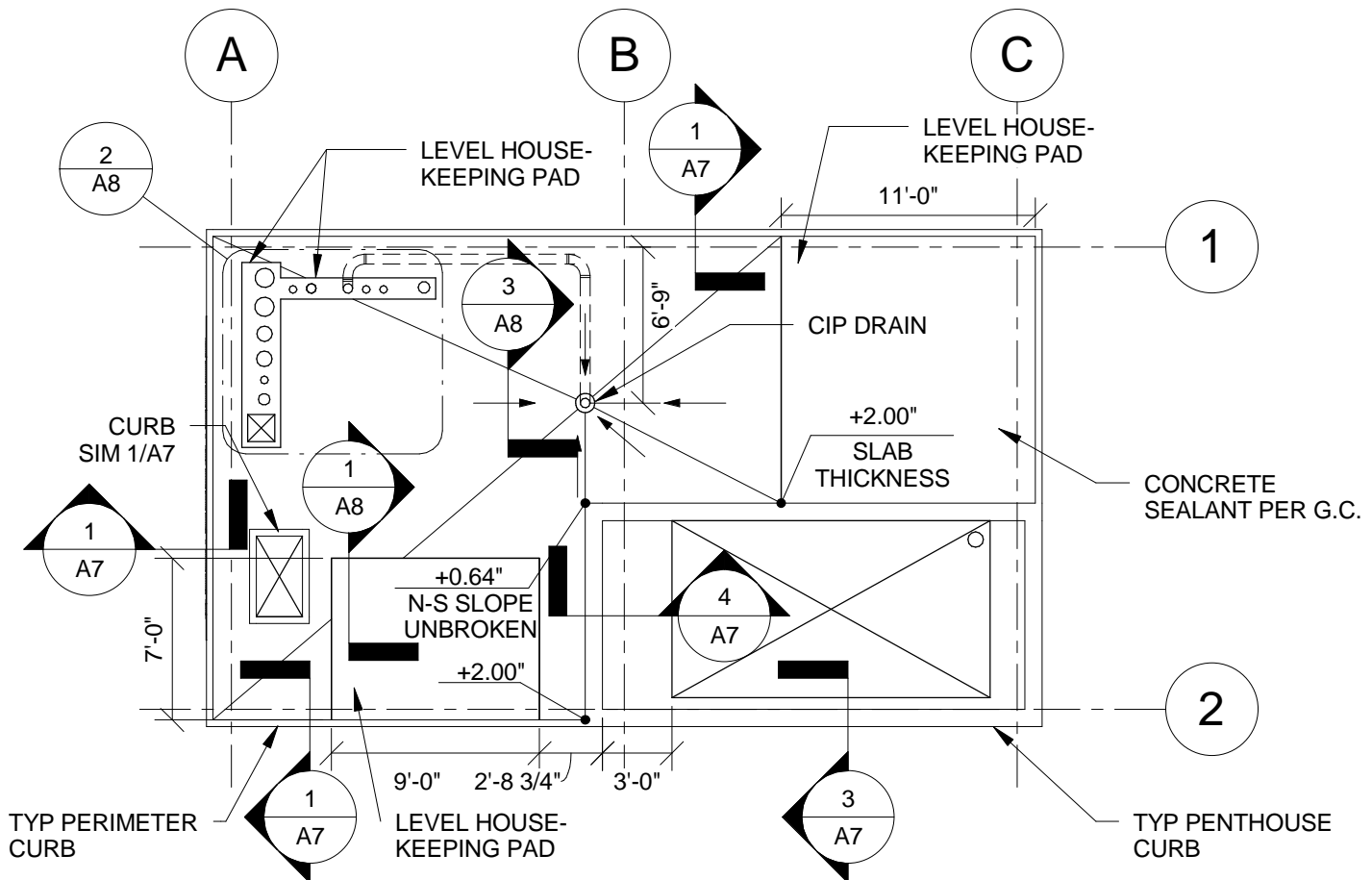
Figure

A5.1

Date
11/04/2011

SLAB REINFORCING NOTES:

1. SLAB IS 8" THICK AT DRAIN LOCATION, INCREASING TO 10" THICK AT PERIMETER. SEE DETAILS.
2. SLAB BARS AND HOOKS AS INDICATED PER S-06A, U.O.N.
3. TOP BARS REMAIN HORIZONTAL AND LEVEL.
4. ADD 6X6-W6/W6 WWF FOLLOWING TOP SURFACE W/ CONSTANT 3/4" COVER.
5. SLOPE VARIES BETWEEN 3/32" PER FOOT (MIN) TO 1/4" PER FOOT (MAX).
6. APPLY CONCRETE SEALANT OVER ENTIRE ROOF SURFACE. SEALANT TO BE SPECIFIED BY G.C.



NOTES:

1. INFORMATION IN PARANTHESIS (XXX) FOR REFERENCE ONLY. INDICATED NOTES ARE SUPERCEDED BY OTHER NOTED INFORMATION AND FIELD CONDITIONS

REVISIONS			
No.	Date	Description	Drawn By
C	09/08/2011	Roof slope, curbs, and housekeeping pads	Mintz, S.
3	TBD	As Built	Mintz, S.

NOT TO SCALE



UCSD

UNIVERSITY OF CALIFORNIA, SAN DIEGO
DEPARTMENT OF STRUCTURAL ENGINEERING
LA JOLLA - CALIFORNIA 92093-0085 - (858) 822-5935

APPROVED FOR CONSTRUCTION

ROOFTOP DRAINAGE PLAN

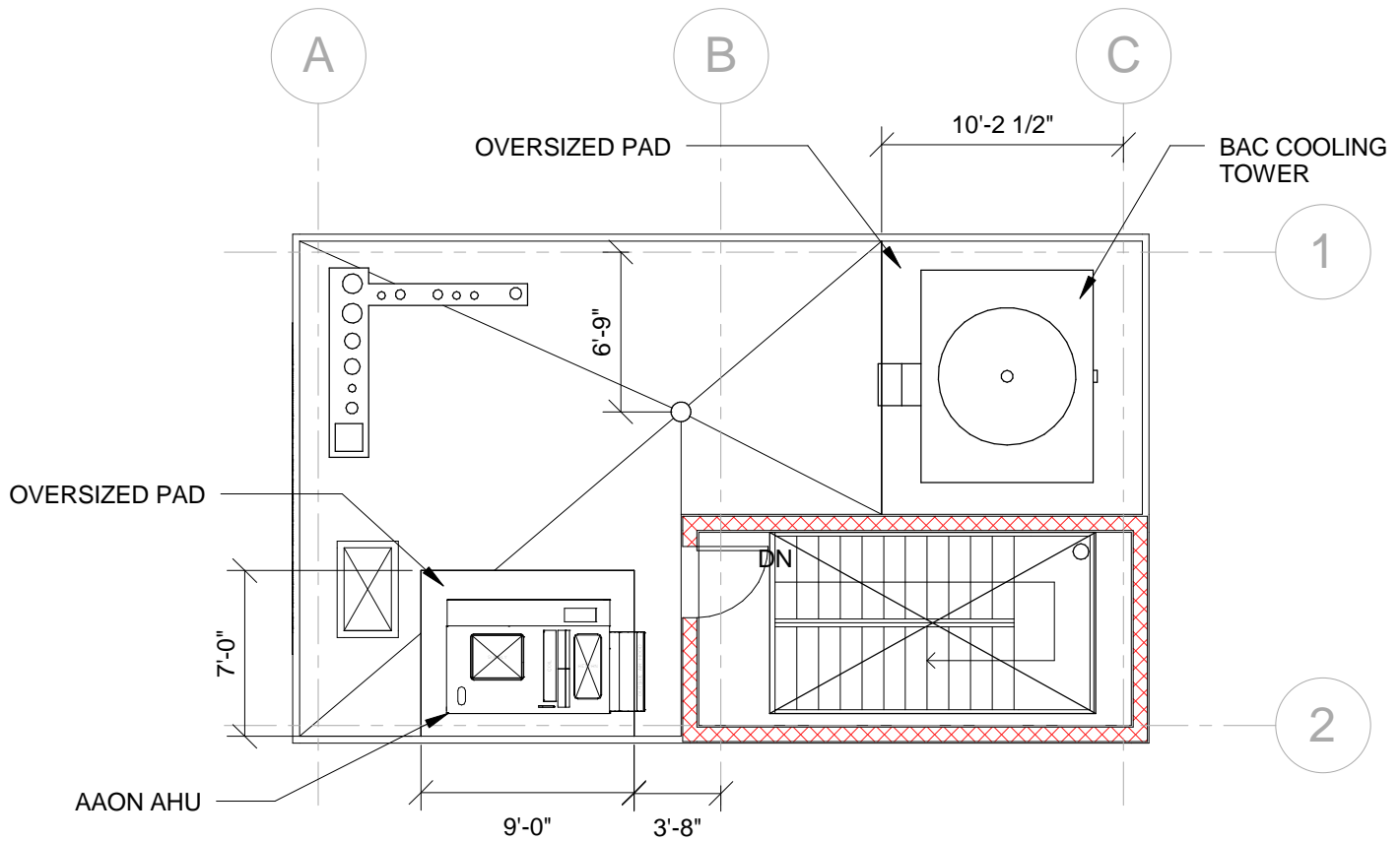
Figure

A6.0

DRAINAGE PLAN

Project Name
BNCS

Date
11/04/2011



REVISIONS			
No.	Date	Description	Drawn By

NOT TO SCALE



UCSD

UNIVERSITY OF CALIFORNIA, SAN DIEGO
DEPARTMENT OF STRUCTURAL ENGINEERING
LA JOLLA - CALIFORNIA 92093-0085 - (858) 822-5935

APPROVED FOR CONSTRUCTION

ROOFTOP EQUIPMENT
LAYOUT

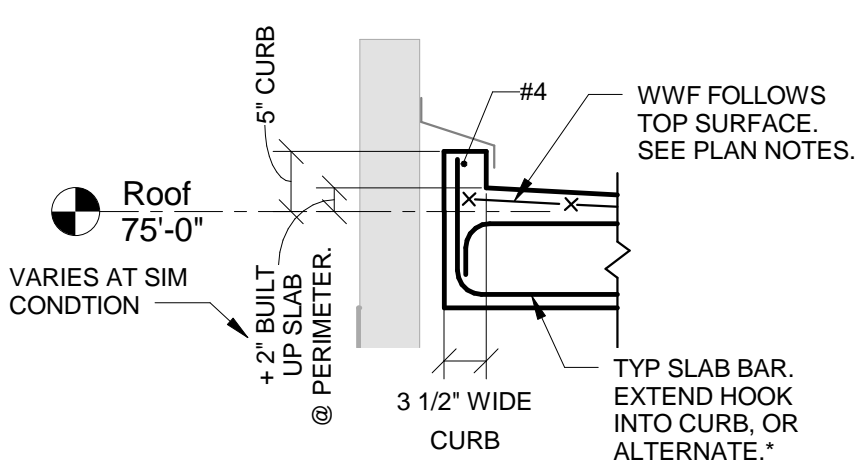
PARTITION DRAWINGS

Project Name
BNCS

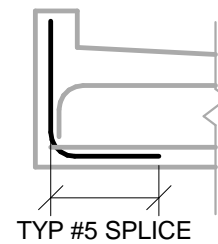
Figure

A6.1

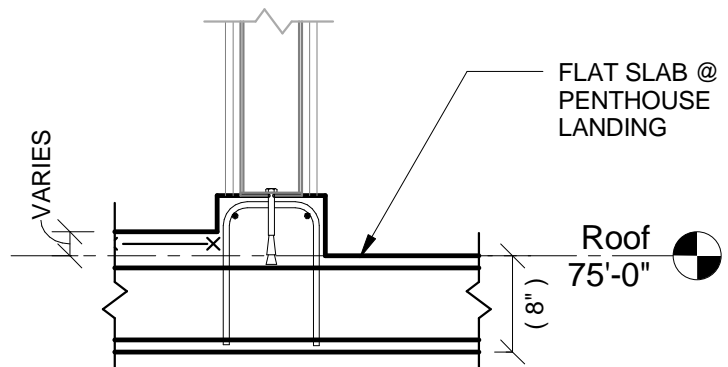
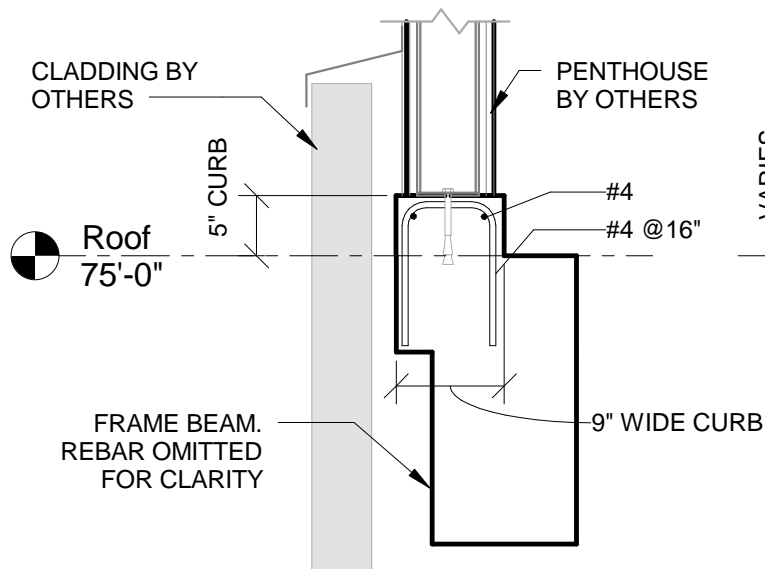
Date
11/04/2011



*** ALTERNATE AT GC'S OPTION:**
HOOK BOTTOM BARS PER S-06A.
ADD #5 DOWEL AT EACH BOTTOM BAR AS SHOWN THUSLY:



① TYP PERIMETER CURB
3/4" = 1'-0"



SEE DETAIL 3 FOR INFO NOT NOTED.

③ TYP PENTHOUSE CURB
3/4" = 1'-0"

④ PENTHOUSE LANDING
3/4" = 1'-0"

REVISIONS			
No.	Date	Description	Drawn By
C	09/08/2011	Roof slope, curbs, and housekeeping pads	Mintz, S.

NOT TO SCALE



UCSD

UNIVERSITY OF CALIFORNIA, SAN DIEGO
DEPARTMENT OF STRUCTURAL ENGINEERING
LA JOLLA - CALIFORNIA 92093-0085 - (858) 822-5935

APPROVED FOR CONSTRUCTION

ROOF DETAILS

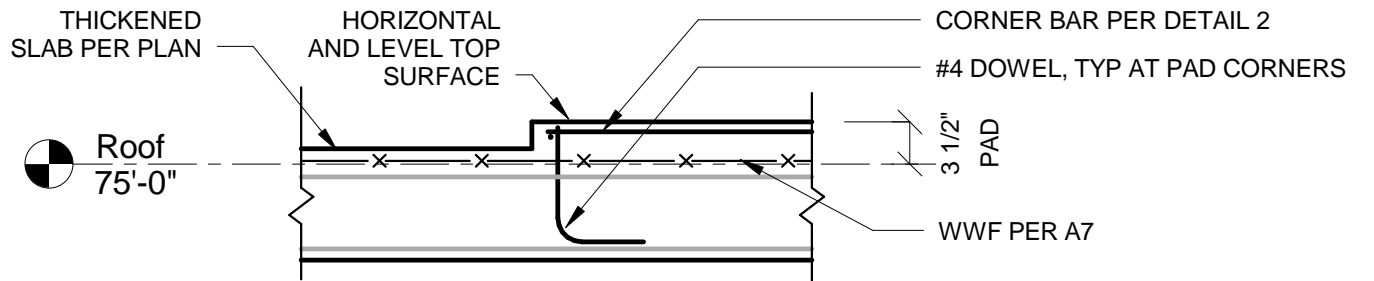
DRAINAGE PLAN

Project Name
BNCS

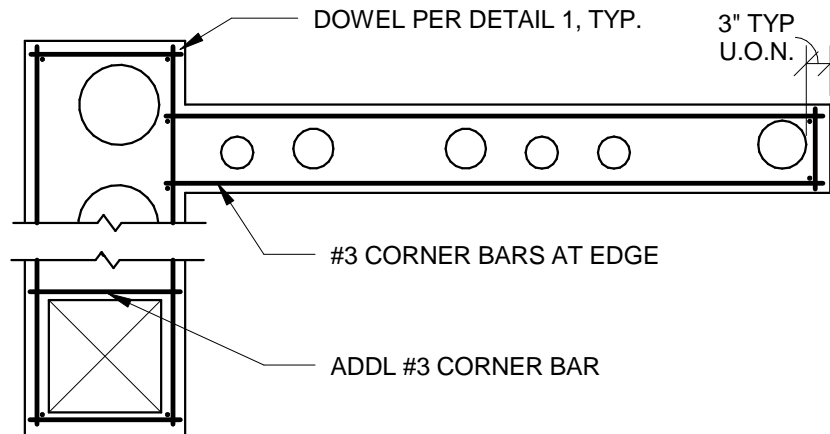
Figure

A7

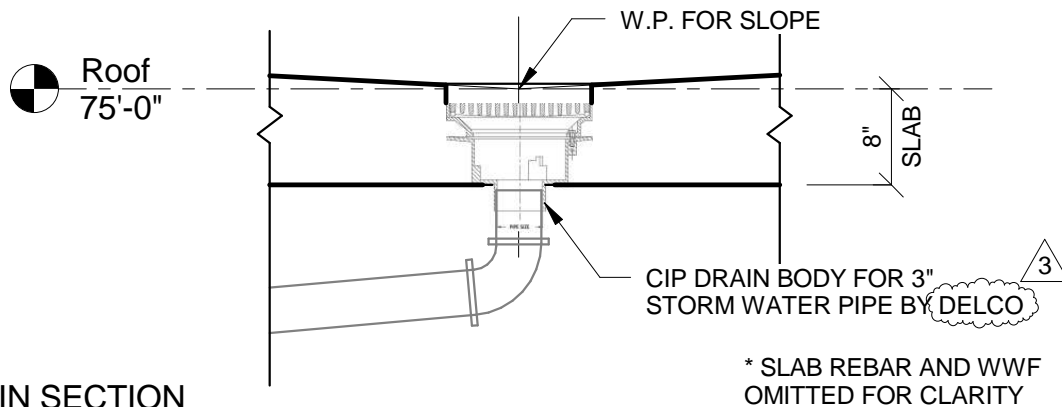
Date
11/04/2011



① TYP HOUSEKEEPING PAD SECTION
3/4" = 1'-0"



② HOUSEKEEPING PAD @ PENETRATIONS
1/2" = 1'-0"



③ DRAIN SECTION
3/4" = 1'-0"

REVISIONS			
No.	Date	Description	Drawn By
C	09/08/2011	Roof slope, curbs, and housekeeping pads	Mintz, S.
3	TBD	As Built	Mintz, S.

NOT TO SCALE



UCSD

UNIVERSITY OF CALIFORNIA, SAN DIEGO
DEPARTMENT OF STRUCTURAL ENGINEERING
LA JOLLA - CALIFORNIA 92093-0085 - (858) 822-5935

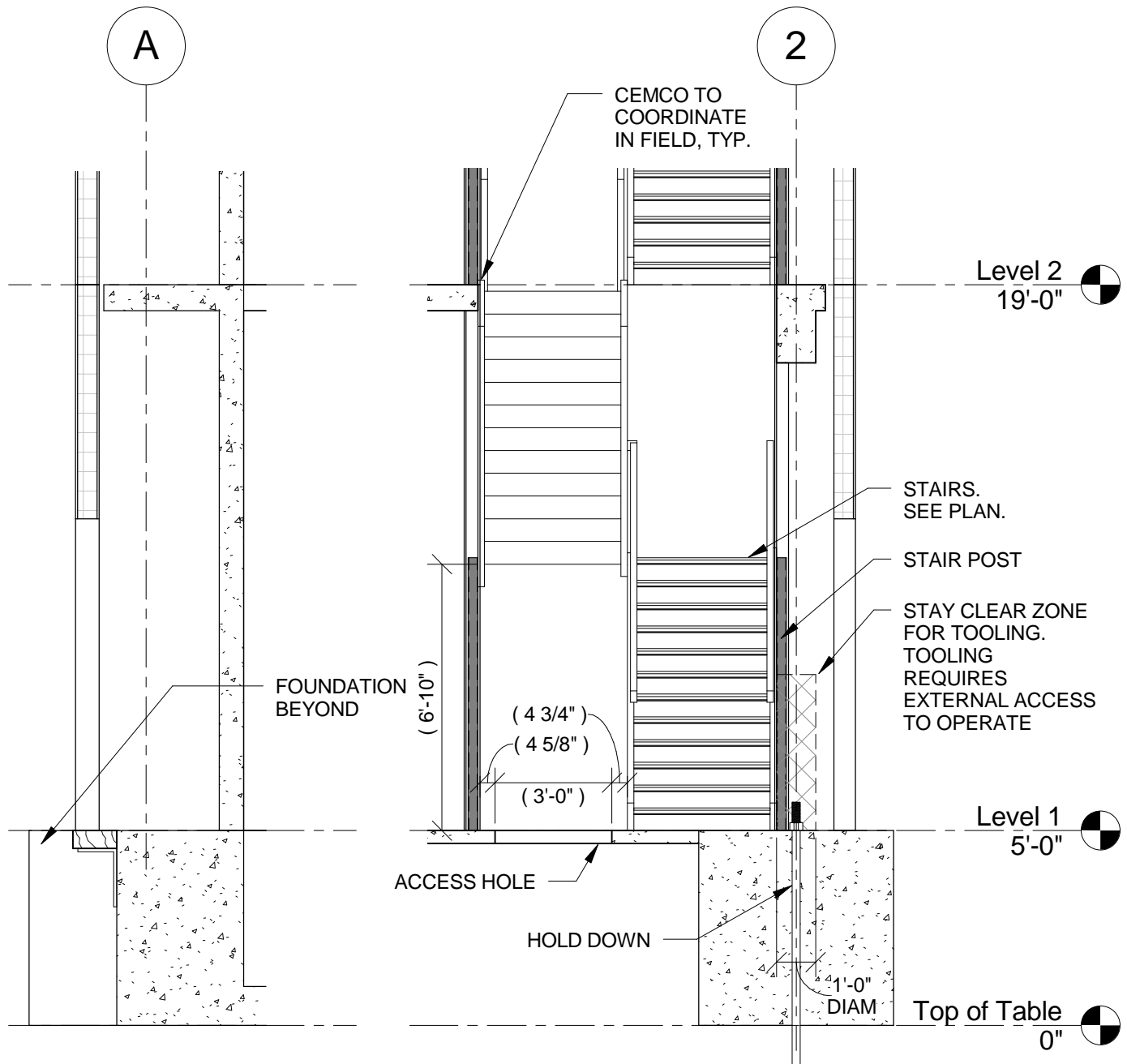
APPROVED FOR CONSTRUCTION

ROOF DETAILS

DRAINAGE PLAN

Project Name
BNCS

Figure
A8
Date
11/04/2011



① DTL @ E/W FTG
1/4" = 1'-0"

② EXT WALL @ STAIR
1/4" = 1'-0"

REVISIONS			
No.	Date	Description	Drawn By

NOT TO SCALE



UCSD

UNIVERSITY OF CALIFORNIA, SAN DIEGO
DEPARTMENT OF STRUCTURAL ENGINEERING
LA JOLLA - CALIFORNIA 92093-0085 - (858) 822-5935

APPROVED FOR CONSTRUCTION

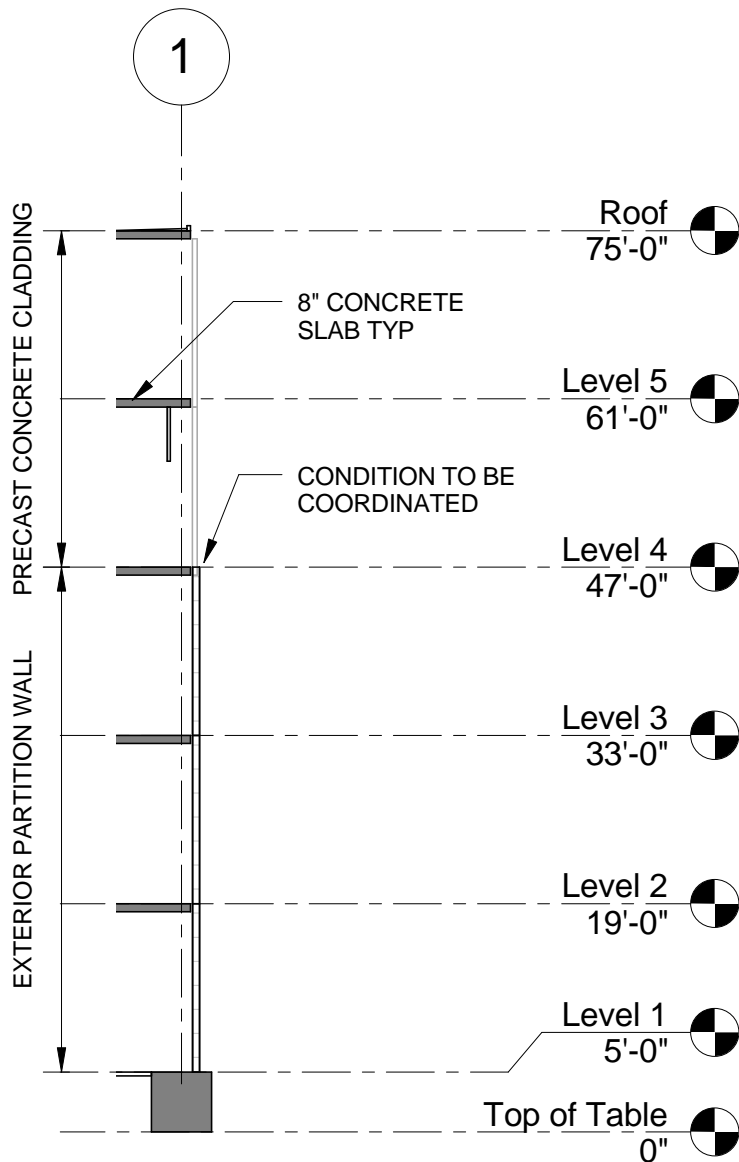
MISC DETAILS

PARTITION DRAWINGS

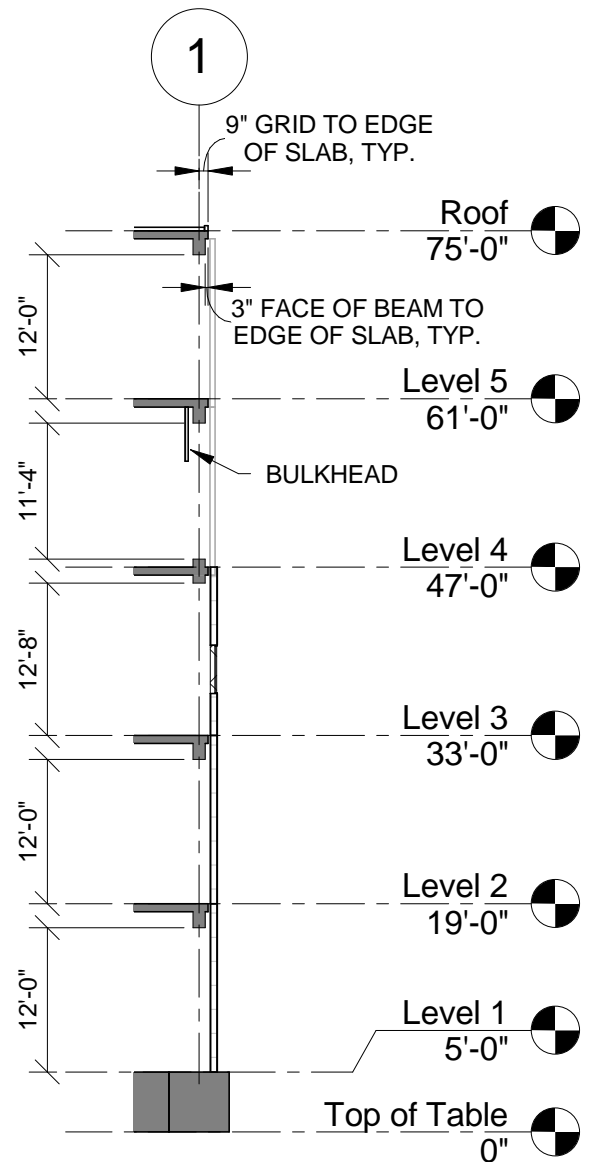
Project Name
BNCS

Figure
A9
Date
11/04/2011

NOTE: LEVEL DATUMS ARE MEASURED TO TOP OF TABLE



1 TYP ELEVATION
1/16" = 1'-0"



2 ELEVATION @ BEAM
1/16" = 1'-0"

REVISIONS			
No.	Date	Description	Drawn By

NOT TO SCALE



UCSD

UNIVERSITY OF CALIFORNIA, SAN DIEGO
DEPARTMENT OF STRUCTURAL ENGINEERING
LA JOLLA - CALIFORNIA 92093-0085 - (858) 822-5935

APPROVED FOR CONSTRUCTION

ARCHITECTURAL SECTIONS

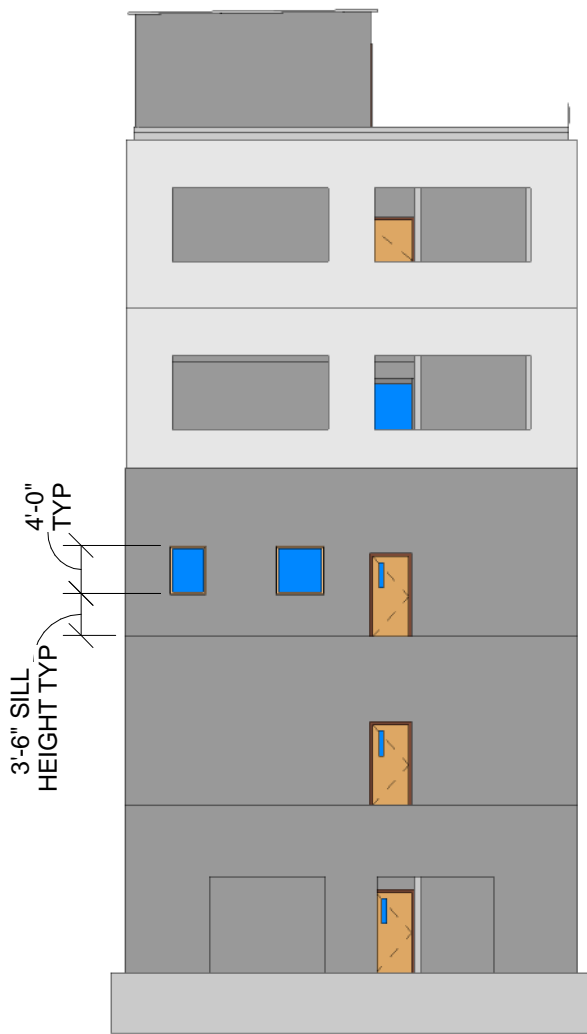
Figure

PARTITION DRAWINGS

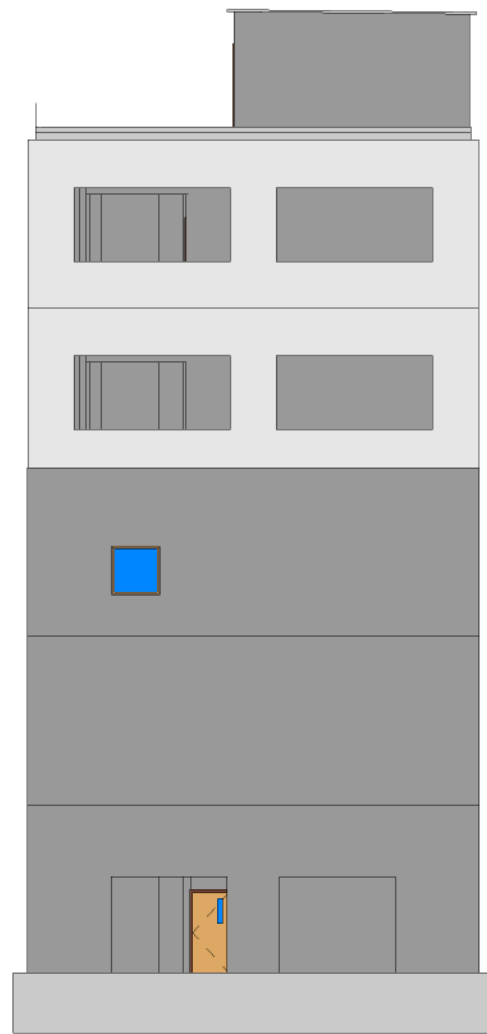
A11

Project Name
BNCS

Date
11/04/2011



① NORTH ELEVATION
1/16" = 1'-0"



② SOUTH ELEVATION
1/16" = 1'-0"

REVISIONS			
No.	Date	Description	Drawn By

NOT TO SCALE



UCSD

UNIVERSITY OF CALIFORNIA, SAN DIEGO
DEPARTMENT OF STRUCTURAL ENGINEERING
LA JOLLA - CALIFORNIA 92093-0085 - (858) 822-5935

APPROVED FOR CONSTRUCTION

BUILDING ELEVATIONS

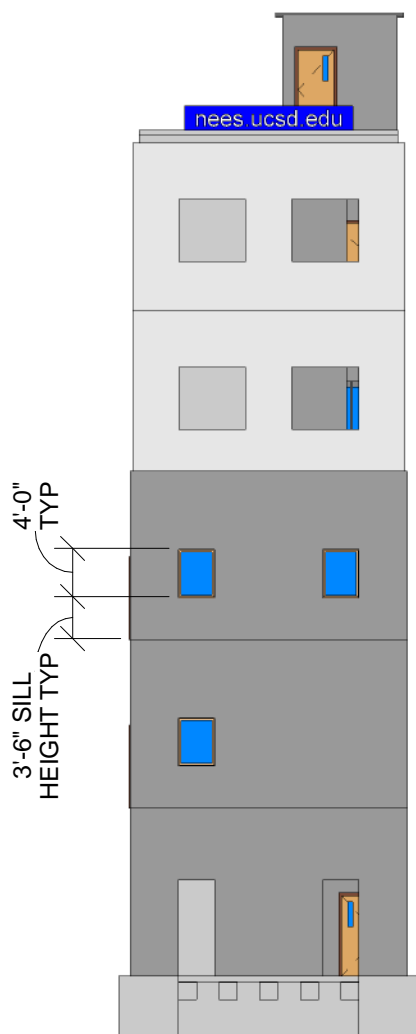
ARCHITECTURAL DRAWINGS

Project Name
BNCS

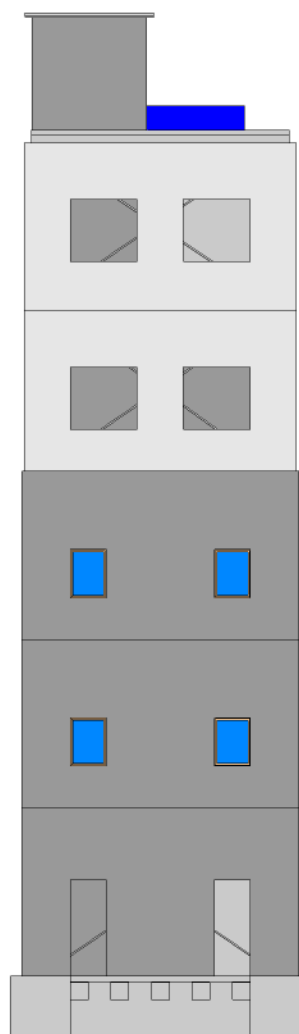
Figure

A12

Date
11/04/2011



① WEST ELEVATION
1/16" = 1'-0"



② EAST ELEVATION
1/16" = 1'-0"

REVISIONS			
No.	Date	Description	Drawn By

NOT TO SCALE



UCSD

UNIVERSITY OF CALIFORNIA, SAN DIEGO
DEPARTMENT OF STRUCTURAL ENGINEERING
LA JOLLA - CALIFORNIA 92093-0085 - (858) 822-5935

APPROVED FOR CONSTRUCTION

BUILDING ELEVATIONS

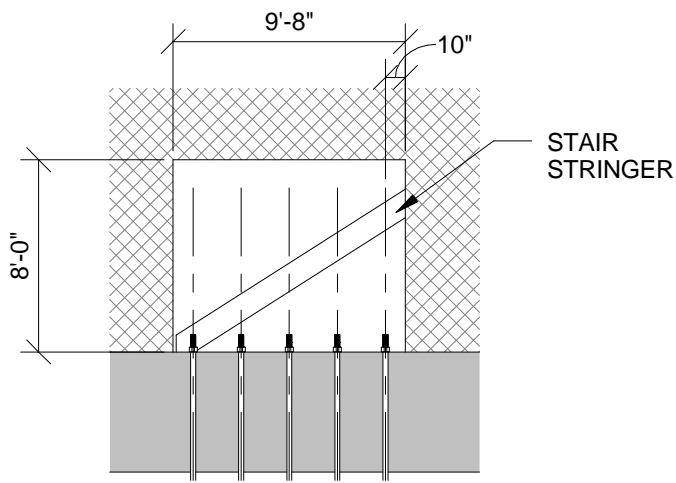
ARCHITECTURAL DRAWINGS

Project Name
BNCS

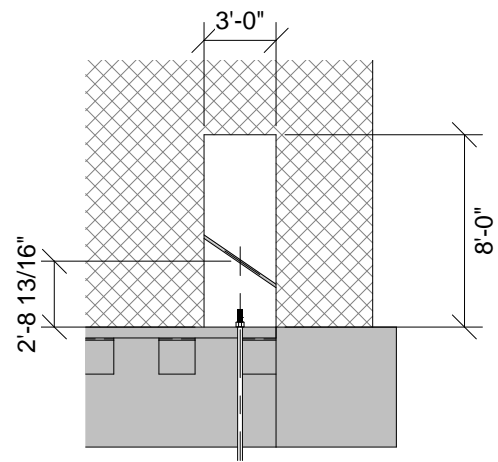
Figure

A13

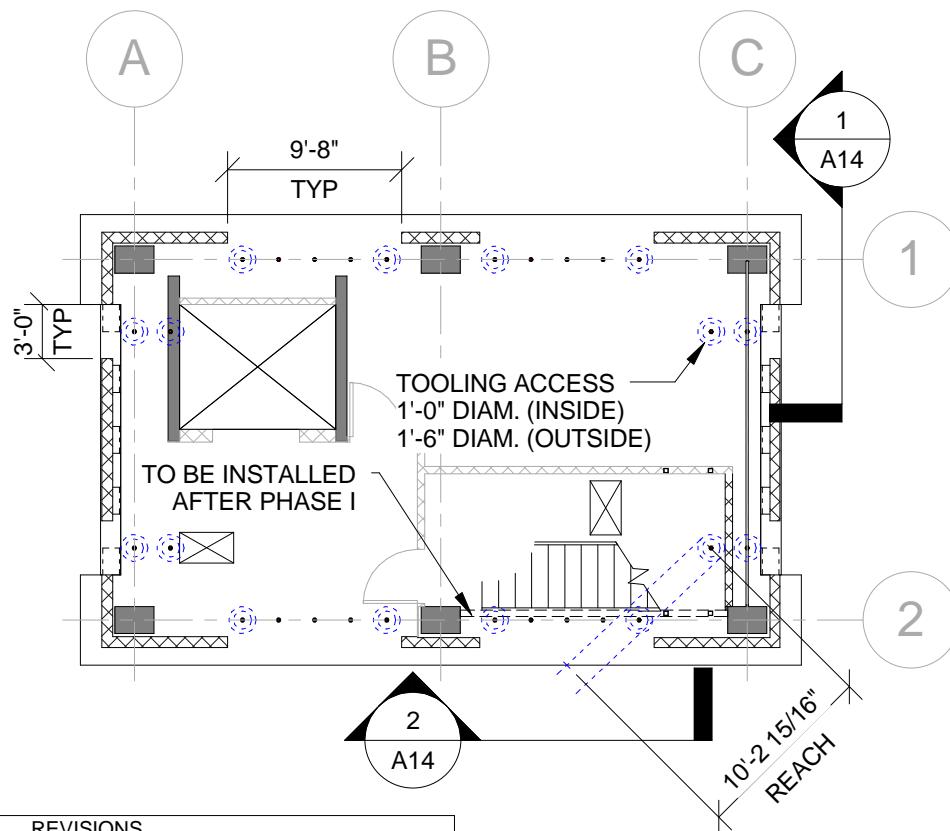
Date
11/04/2011



2 SOUTH WALL @ STAIR
1/8" = 1'-0"



1 EAST WALL @ BRACE
1/8" = 1'-0"



REVISIONS			
No.	Date	Description	Drawn By

NOT TO SCALE



UCSD

UNIVERSITY OF CALIFORNIA, SAN DIEGO
DEPARTMENT OF STRUCTURAL ENGINEERING
LA JOLLA - CALIFORNIA 92093-0085 - (858) 822-5935

APPROVED FOR CONSTRUCTION

TIE-DOWN ACCESS

Figure

A14

Project Name
BNCS

Date
11/04/2011